



# CENTRAL CROSSINGS

MONTHLY NEWS LETTER OF THE

CENTRAL RAILWAY  
MODEL & HISTORICAL ASSOCIATION, INC.

Volume 20, Number 12

December 2011

P. O. Box 128  
Central, SC 29630

WEBSITE:  
[www.crmha.org](http://www.crmha.org)

MUSEUM &  
MEETING SITE  
108 Werner Street  
Central, SC

### OFFICERS

President / CEO:  
Jim Reece

Vice President:  
Ron Keith

Stationmaster  
Glenn Nasworthy

Paymaster  
Bob Folsom

Webmaster  
Ed Welch

Show Chair:  
Al Costa

Museum Curator:  
Jack Green

Editor & Producer:  
Robert M. Seel, AIA

**Next Meeting:**  
**Dec. 8, 2011**  
**5:30 PM**

**KEITH & SANDY**  
**EUSTIS' HOUSE**  
**CHRISTMAS**  
**DINNER**



***I OUGHTTA SLUG YOU!*** The retrofitted, remote control Mother-and-Slugs set that we had been following was picked up in Easley (**below**) and hauled toward Greenville (**above**) on November 1, 2011. Note the rebuilt cab and control booth on the pilot step. SD70M No. 2592 leads the consist, followed by ES40DCs No. 7593 and 7677. **Photos by Rob Seel.**





**SCHEDULED  
EVENTS & SHOWS**

**December 10, 2011**  
**Nashville, TN**  
**Music City Chapter TCA**  
**Christmas Toy Train Show**  
 Tennessee State Fair Grounds Agriculture Building  
 9:00 – 4:00 [www.dixiedivisiontca.com](http://www.dixiedivisiontca.com)  
 \$7.00 / Children 12 and under Free

**December 10, 2011**  
**Columbia, SC**  
**Christmas Train Show**  
 Westminster Presbyterian Church  
 9:30 – 1:00 <http://palmettochapter.net>  
 \$3.00 donation / Children 12 and under Free

**January 14-15, 2012**  
**Savannah, GA**  
**23<sup>rd</sup> Annual Model Railroad & Train Show**  
 Armstrong State University  
 10:00 – 5:00 / Sun 10:00 – 4:00  
[www.coastalrailbuffs.com](http://www.coastalrailbuffs.com)  
 \$5.00 / Children 12 and under and active military Free



**March 17-18, 2012**  
**Atlanta, GA**  
**The Model Train Show**  
 Cobb Galleria <http://themodeltrainshow.com>  
 Sat 10:00 – 5:00 / Sun 10:00 - 4:00  
 \$8.00 / Children 12 and under Free

Upcoming Events for the  
**Central Railway Model & Historical Association**  
 as well as Regional shows and events worth mentioning

**PROGRAM SCHEDULE**

December 3, 2011 Annual Open House on the  
**CASCADE WESTERN RAIL ROAD**  
 Noon until the beer's gone at Howard Garner's House

December 8, 2011 **CHRISTMAS DINNER  
 & Annual Meeting**  
 Sandy Eustis' House

December 10, 2011 Annual Santa Train on the  
*Greenville & Western Railway*  
 From 9:30AM Honea Path to 6:00 PM in Pelzer

January 5, 2012 CRM&HA Meeting

February 2, 2011 CRM&HA Meeting

February 4-5, 2011 ANNUAL TRAIN SHOW

**2<sup>ND</sup> SATURDAY**  
**MUSEUM OPEN TO**  
**THE PUBLIC**  
*COME RUN TRAINS & HAVE SOME*  
**FUN !**  
**DECEMBER 3, 2011**  
**JANUARY 14, 2012**  
**FEBRUARY 11, 2012**





## GENERAL MEETING MINUTES

By Glenn Nasworthy,  
Stationmaster

SERVES THE UPSTATE

November 3, 2011

### Regular Meeting at the Central Railway Museum

The meeting was called to order by President Jim Reece. Twenty three members were in attendance.

There were two guests present, Jerry Jordan and his grandson, Will.

The Treasurer reported that all bills were paid to date. He further elaborated on the importance of the Train Show to our finances for the following year. Budget reports are available for those who want them.

### OLD BUSINESS

There have been no material invoices to the Town of Central in September. We need any invoices for October.

In Al Costa's absence, there was no report on the "Coats for Tots" program. Jim is to call him. It was stated that it is too late to make plans at this point.

President Reece has been in touch with the City of Easley and reported they are working on the contract for 2012. The Show will be Feb. 4<sup>th</sup> and 5<sup>th</sup>, 2012. The City recommends \$5.00 for seniors and \$6.00 for 10 and up.

Joe Fitzpatrick reported nothing new as far as the Boy Scout merit badge program for Railroads is concerned. They are supposed to call him.

"Past Perfect" museum software: The Town of Central has agreed to this purchase.

Pickens County Accommodations Grant: The grant of \$2,500 has been received. This money will be applied to the Train Show. Other information will be reported.

Al Costa and Dan Marett are taking information for anyone wanting a club T-shirt. These will be ordered in early December so get your information in as soon as possible.

You can e-mail Dan with your information.

Bob White has graciously offered a donation to help purchase fascia and curtains for the layout.

It was decided to pursue charging the train headlight to the Town of Central's artifacts budget. Jack is to follow up on this.

Membership dues for 2012 are payable from November 1 until the first meeting in the New Year. That will be January 5, 2012.

The combined Annual Meeting and Christmas Party will be held at Ron Keith's again this year. It will be December 8<sup>th</sup>, 2011, so mark your calendars with this change. Sandy Eustis will be contacting you with information about the party and the directions to get there. We will be electing officers so be sure to come.

### COMMITTEE REPORTS:

**Train Show:** Howard reported that the mailings have gone out and we have already received some table reservations back.

**Museum Building:** Nothing new to report

**Central Railroad Festival:** The City Committee had a meeting last Tuesday

**Portable Layout:** No report

**Lionel Room:** No report

**American Flyer:** No Report

**Programs:** No report

**Webmaster:** No report

**Newsletter:** Rob Seel thanked everyone for the information they had provided and asked for more information on member layouts.

**Museum Curator:** No report

**Property Inventory Administrator:** No report

**Computer Administrator:** Howard Garner reported that we now a backup storage system and a backup power supply.

## HO Layout:

**Benchwork:** Nothing new to add.

**Wiring:** Howard Garner reported they will be working on upper level lighting.

**Scenery:** Scenery is moving along well. Joe Fitzpatrick has about finished the Asheville yard area.

**Rolling Stock:** Rob Seel is working on Central Railway passenger cars (*and they look awesome ~ed.*).

**Trackwork:** Bob Folsom said he is still building turnouts and we are replacing some track

## **NEW BUSINESS:**

Sandy Eustis, for the Nominating Committee, announced we have three nominees for the office of President, Secretary and a new position of 2<sup>nd</sup> Vice President. They are: Dan Marett for President, Ralph Watson for Secretary and Joe Fitzpatrick for 2<sup>nd</sup> Vice President. Nominations from the floor were called for.

There being no nominations from the floor it was moved by Bruce Gathman and seconded by Jim Reece that the nominations be closed. It was passed by voice vote. (The Nominations Committee consists of: Sandy Eustis-Chairman, Bob Folsom, Glenn Nasworthy, Ette Ruppert, Howard Garner & Jim Reece.)

The election is to be held at the Annual Meeting on December 8, 2011.

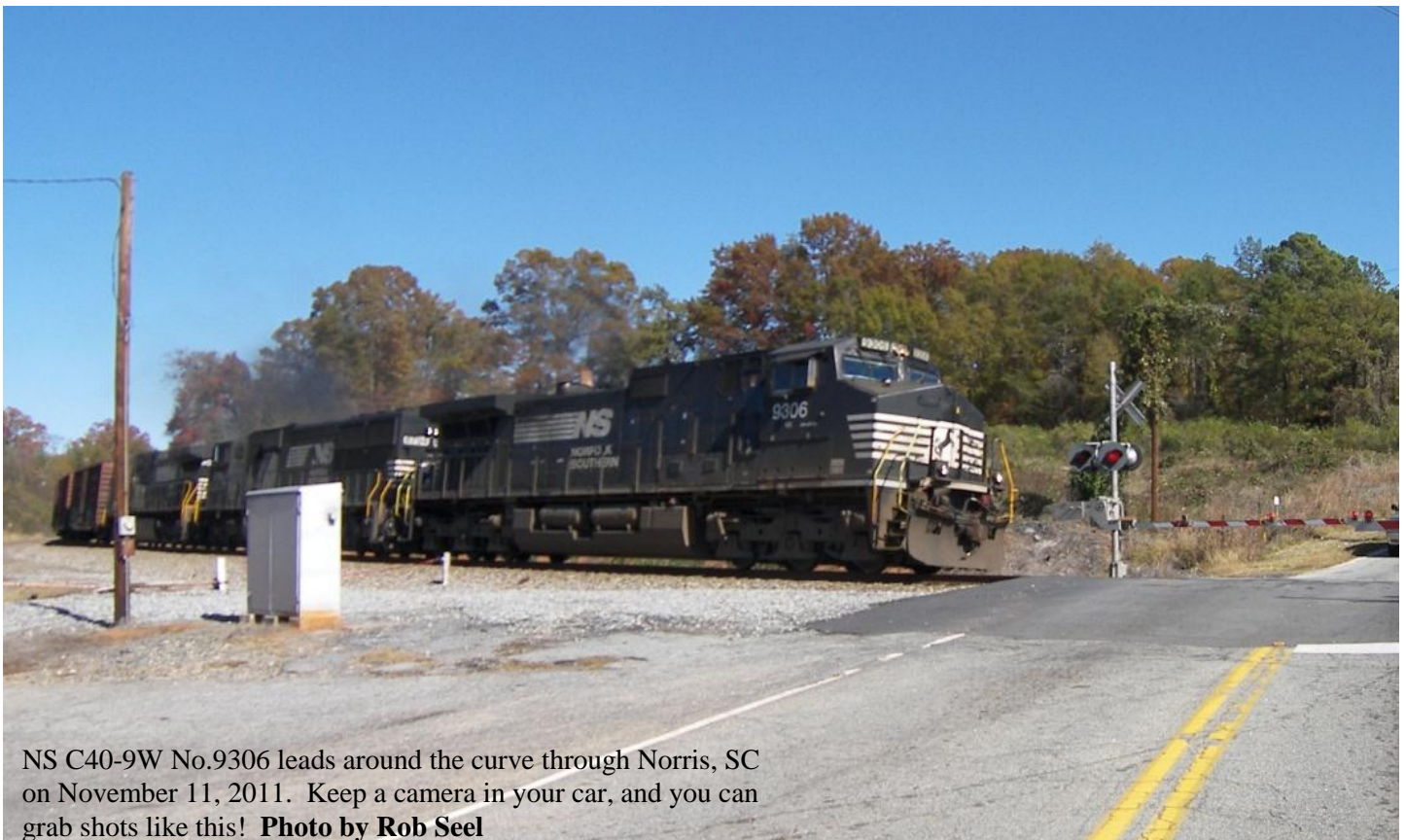
## **RAILFAN & HOBBY NEWS:**

The mother and two slugs Mac reported on last month have been completed and made into remote control. They were picked up and moved north about November 1<sup>st</sup>.

Will Jordon donated a Tyco caboose to the club. Thank you Will!!

**IMPORTANT:** Howard's annual Open House will be the first Saturday in December. That is December 3<sup>rd</sup>. We're all invited.

**There being no program, the meeting was adjourned.**



NS C40-9W No.9306 leads around the curve through Norris, SC on November 11, 2011. Keep a camera in your car, and you can grab shots like this! **Photo by Rob Seel**

# PATENTLY SPEAKING

Submitted by Bruce Gathman

There are generally two parts to patent submissions: a written description of the invention and drawings (not to scale) that are keyed to this written description. Depending on the complexity of the invention more than one page of descriptions and/or drawings may be required to fully explain the merits of the design. You may find these descriptions online at—<http://patft.uspto.gov/netahtml/PTO/patimg.htm> by entering the patent number in the “view patent” box.

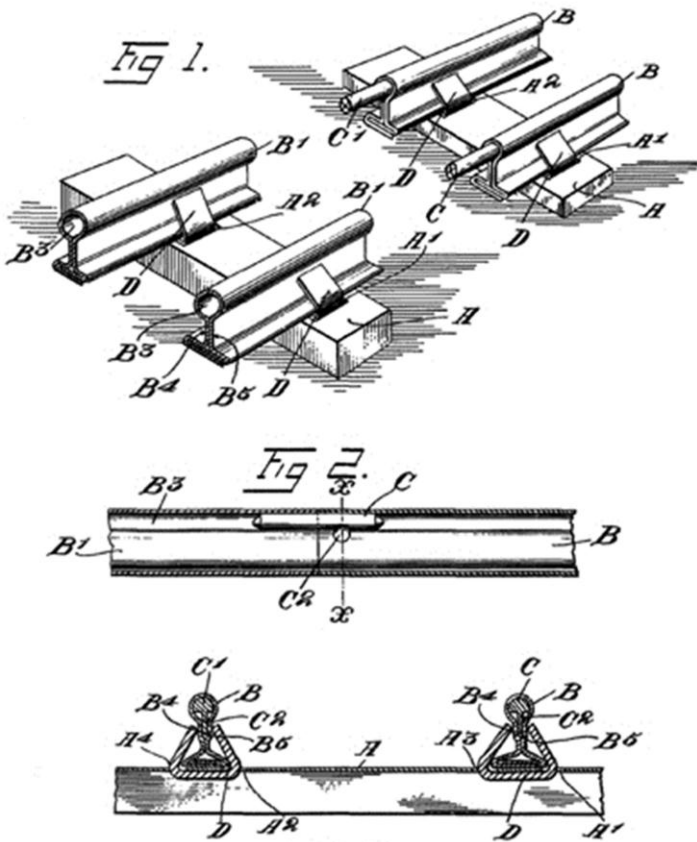
JOSHUA L. COHEN (BY JUDICIAL CHANGE OF NAME NOW JOSHUA L. COWEN).

TOY RAILWAY RAIL.

APPLICATION FILED DEC. 19, 1909.

976,722.

Patented Nov. 22, 1910.



WITNESSES:  
*H. L. Mudrook.*  
*Winnifred S. Miller*

Fig. 3.

INVENTOR  
*Joshua L. Cohen*  
 BY *Frank W. Schlegel*  
 ATTORNEY

Be it known that I, JOSHUA L. COHEN, a citizen of the United States, and a resident of New York City, in the county of New York and State of New York, have invented certain new and useful Improvements in Toy-Railway Rails, of which the following is a specification. My invention relates to toy railroad tracks, and the object of the same is to provide a track in which a pin is used to connect the ends of the rails in alignment with each other, and means for securely holding the pins in the rails. A further object is to hold the cross tie, rail and pin in the rail, together, by the same means. Referring to the drawings which form a part of this specification, Figure 1, is a perspective view of two end sections of track disclosing the rails mounted on and connected to cross ties. Fig. 2, is a longitudinal sectional view through two abutting rails and disclosing the connecting pin. Fig. 3, is a cross sectional view through the tie and rails, and discloses the means by which the parts are secured together.





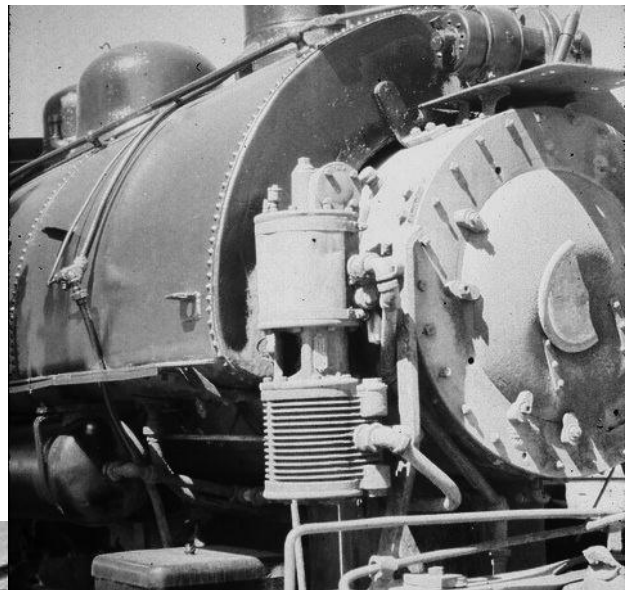
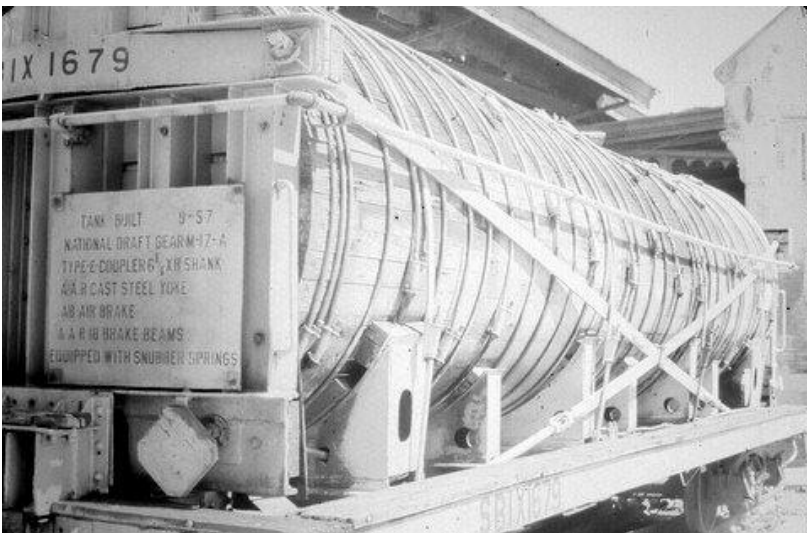
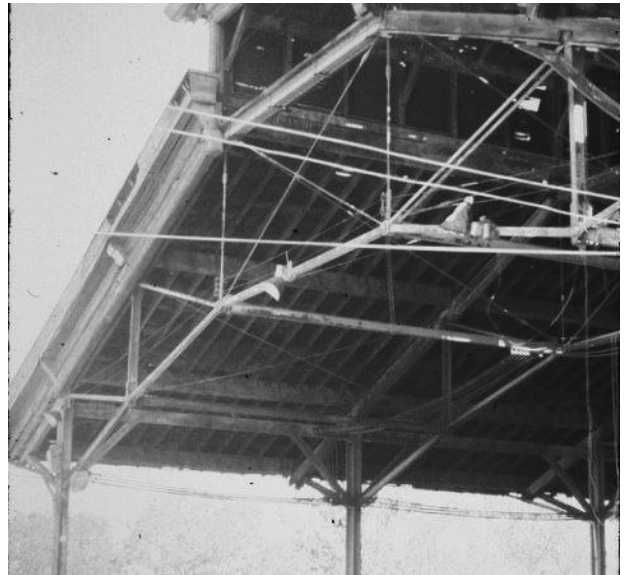
# SAGE'S PAGES

## ☞ MONTGOMERY, AL ☞

BY SAGE VIEHE

These are from a trip to Montgomery, Alabama in 1979. I found them in a box of old slides. I have no history on them but thought the architecture may be worth a look to some members who have the history. As you can see on the color slide, the passage under the station that would normally be taken to the train display was flooded. We had to go around and over. I have not seen this type of engine and wish I had taken more extensive photos at the time of all of it. I was quite young at the time. (*Union Station, built by the L&N in 1898 was restored in 1983 – ed.*)







# PART 1 - BUILDING THE RED ROCK NORTHERN



BY DON BRADY

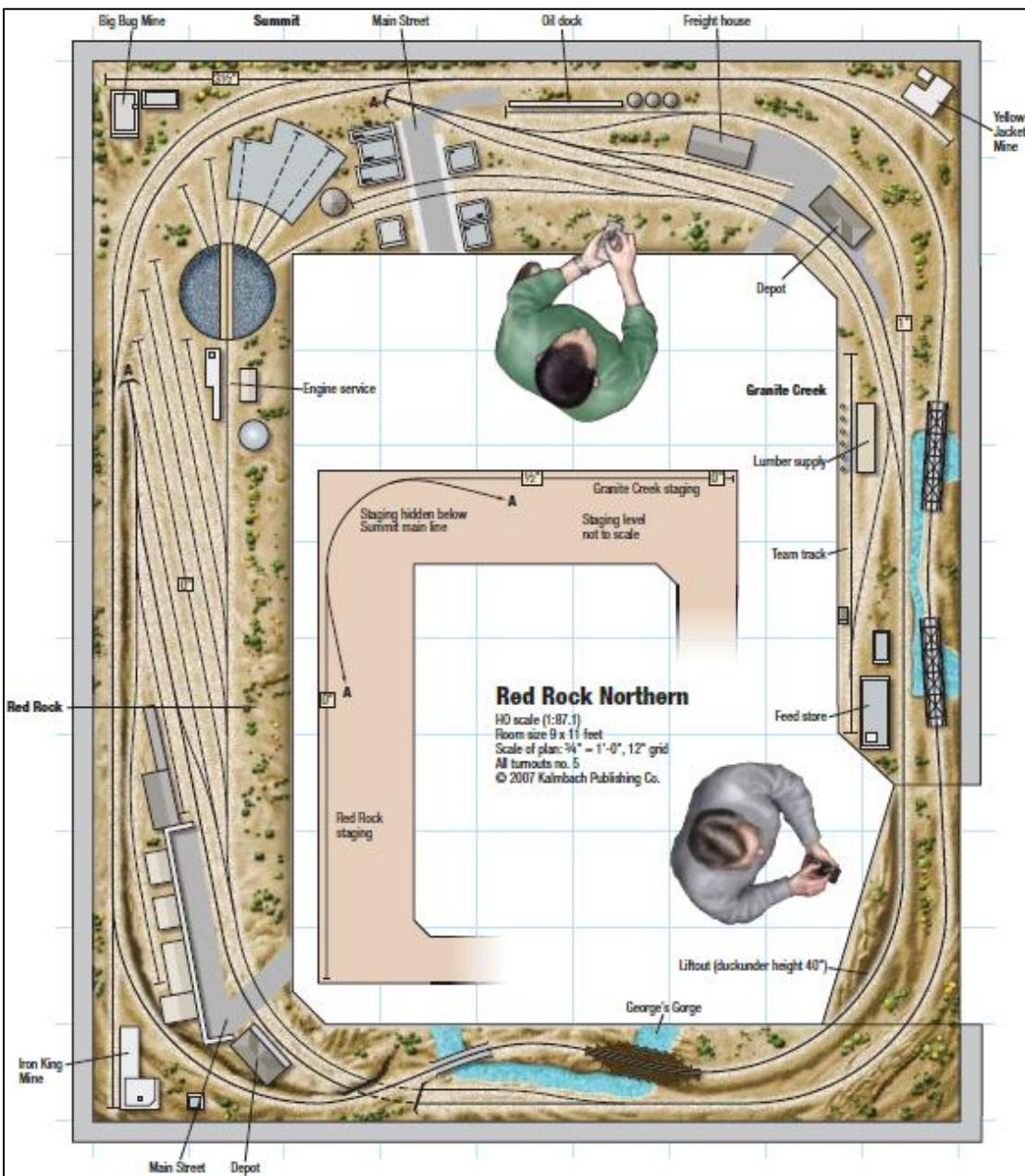


HI ! My name is Don Brady. I have been a member of the CRM&HA for a few months now for the sole reason to learn from the experts. I probably have nothing to contribute at all in the face of such an elite collection of hobbyists, but here goes anyway. I have been a collector for over 50 years, and have an extensive collection of rolling stock, locomotives and scenery. I have just never had a space for a layout or the knowledge to even know how to start one.

I had a room (14 X 16) that could be used IF I could find a plan to fit! In the "Model Railroader" track plans archive I came across the "Red Rock Northern" track plan (below), and with a few modifications it would fit my room perfectly. The track plan gave me the flexibility to utilize my equipment and scenery, because it didn't lock me into a specific period or location. I was born and raised on a dairy ranch in California and collect AT&SF, SP, V&T, D&RGW, Sierra, CP and other old time rail names. I collect rolling stock from the 1800s to

the late 1950s, mostly in steam. The plan allows me to change to whatever era or location I choose because the scenery is local to any era or location.

Before I go any further, I would like to thank Sandy Eustis for his excellent class and Bob Folsom for his input and expertise. 'Doc' McGinnis and Howard Garner have been invaluable in assisting me in changing from DC to DCC --- a move I am still not sure I am ready to make --- but the gains in sound and control are so tempting I just feel I have to try. I have older equipment, and it will be time consuming (something I don't have much more of) and expensive (something else I don't have much of). The older equipment is also one of the reasons I chose code 100 rail and Peco turnouts for my layout. Not all of my equipment follows RP25 code or NMRA code and I wanted the operation to be as reliable as possible.







I have a circular lift out/duck under section in the corner to give me a “twice around,” dual level, continuous run with plenty of sidings, a yard, and an engine facility for lots of operation (**middle right**).

You can see in this photo (**lower right**), the supports for the backdrop are attached and the turntable is installed. I have 1” x 4” framework with 1/2” plywood base and 1/2” foam sub-roadbed. I showed some of the early pictures of my benchwork to Sandy in the first of his classes and asked if it would hold up. He laughingly stated, “You could exercise a team of horses on that benchwork”. At least I got that part right!

I have a fictitious layout, and prototype doesn’t mean’t me as long it runs reliably.

My layout, as it stands right now, is 9 x 11 feet with a possible (?) Slaty Fork sawmill extension (36 X 39”) on the side. My wife is legally blind, and because we have no family nearby she has been contemplating for a long time to move closer to her sister in Atlanta. Because of this I have built my layout in four modules that bolt together and are on rollers so they can be transported easily (**below left**). The longest module is 2’ x 8’; the smallest is 2’ x 6.’





I guess the whole purpose of this article is to document my progress (or lack thereof) and to enlist any advice or comments that could make my layout better. As I originally stated, I am a collector, not a modeler, and the detail and intricacy of the Club layout blows me away. I know I can never achieve that level of detail. I just wish mine could look half that good.

I have found out the hard way that building a layout is nothing more than jumping hurdles. You see the hurdle in front of you and you have to figure out the best way to get over it. In this picture (**below left**) you can see the back supports installed for the backdrop (which I have still not made a decision on; but I am leaning toward Walthers Instant Horizons) and you can see the turntable is finally installed (after 2 attempts of ‘measuring and cutting’).



My next big hurdle was how to install the hidden staging tracks. I had read an article in a recent “Model Railroader” about using removable plastic/acrylic panels to gain access to the hidden area. That seemed all well and good until I started analyzing my layout as it sits. Did I REALLY want to have to move and roll out my entire layout if I had a problem in staging? I decided “I don’t think so.” What do I do now? Forget staging? What about my second level? How do I get my double runaround without the second level? What am I going to do now? Do I keep everything on one level and forget the double runaround and half my scenery?



I DON’T THINK SO!

Here (**bottom**) you can see a part of my hidden staging area under the yard area, as I will call it. Since I am using the Chooch flexible random stone walls as my transition between levels, I devised a way to open the area from the front. I don’t have enough depth to create a flowing transition, remember I am only working in a 2-foot space.

By gluing a small piece of foam on the top and the bottom, I can create a stop for the front piece. Using the Chooch self-adhesive stone wall, I can bring it to the top of the incline and allow it to hold the removable section from the front. I can then use small stones (as talus) and shrubbery to hide the gap at the bottom of the wall. Mind you, this is all theory, I still have to apply it and see if it will work.

I have also found out the hard way that this plan had never been actually built (to my knowledge) as the dimensions are far TOO small to fit everything into HO scale. The plan would work perfectly for N scale, however. Now I have to go back and readjust the amount of track to use and the layout of scenery and buildings. WHAT A BUMMER!!!





Here (**above**) is a close-up view of the random stone wall.

I hope this will give a halfway believable transition to the layout, but since I am not looking for any prizes or recognition, I guess it really doesn't matter. As long as it works and is reliable and keeps me happy; I guess that is what the hobby is all about. I know there are you that want to model specific areas and time frames, and that is good, but I just want to have a small layout and be able to run trains and have fun. After all, isn't that what the hobby is all about ---- **HAVING FUN?**

I will try to keep an update each month as to my progress (or lack thereof) for the benefit of anyone who attempts such an undertaking. My hat is definitely off to Bob, Howard, Ron and Sandy for what they have achieved. My wife even commented on their layouts, and that is something coming from a woman that is legally blind. See y'all next month! 🚂



**RAIL PHOTO BLUNDER TIP FROM THE EXPERTS:  
MAKE YOUR OWN MISTAKES; DON'T REPEAT OURS!**

Don't experiment with camera settings while waiting for the good shot. This could have been a front page photo. But after missing too many "money shots" due to digital shutter lag I decided to try the auto-drive function before I really knew how it worked. As a result, the shots I got were too far away for good resolution and the NS Brass slipped by (at 25 mph) before I could regroup and try again. As it was, I stood in an overgrown field across from Central City Hall for over an hour on September 28, 2011 waiting for this slow-motion hotshot. The freight parked on the siding waited nearly as long. Fortunately, I had nothing else to do that morning. **Flubbed photo by Rob Seel**



# KEEPING TRACK WITH BRUCE 2011 NARROW GAUGE CONVENTION HICKORY, NC

BY BRUCE GATHMAN



## THE MUSKRAT RAMBLE RAILROAD

is an On30 layout built in Australia, depicting Louisiana bayou country in the 1930s. It was exhibited at the Narrow Gauge Convention in Hickory.

**Above:** The detail is amazing on this 1/4 inch scale bayou steamer coming into the dock.

**Left:** My wife, Mary Rose, talking to one of the Australian builders about how some of the details were made.







**Above:** Attention to the tiniest details is obvious in this photo of the agricultural and fish market. There's even fish on ice inside the building.

**Below:** Nothing belies the relatively small scale of the details.



It is my understanding that this layout will have a permanent home alongside the Sundance Central in a model railroad museum type setting. They also have the Dolly Varden On30 and Silverton Central Sn3 layouts.

Suncoast Center for Fine Scale Modeling  
 2645 Success Drive  
 Odessa, Florida 33556  
[www.finescalemodelling.org](http://www.finescalemodelling.org)

If you Google "Muskrat Ramble Railroad" many more photos and videos can be found. This layout was covered in detail in three issues of the *Narrow Gauge & Short Line Gazette*, November/December 2009, January/February 2010, and March/April 2010. 🚂





**THIS MONTH  
IN  
RAILROAD  
HISTORY**

*~ Courtesy of Bruce Gathman ~*

**DECEMBER**

December 3<sup>rd</sup> – Camas Prairie Railroad begins operation in 1909.

December 12<sup>th</sup> – U.S. Congress passes Interstate Commerce Act in 1887.

December 24<sup>th</sup> – Great Northern Railroad completes the Cascade Tunnel in 1928.

December 26<sup>th</sup> – U.S. Government temporarily nationalizes railroads for WW1 in 1917.



**PARTING SHOTS:** Above: NS freight lead by ES40DC No.7717 sits parked on the siding across from the Central, SC post office waiting for the NS Executive Train to pass on September 28, 2011. Below: Pickens VO-660 No. 2, blt. BLW 1945 has been repositioned on the front track at the Chattahoochee Locomotive Company in Pickens, along with two formerly grey boxcars. **Photos by Rob Seel.** 🚂